



Product Description

REFLOMAX GLODIAN™ VC-E4(ECE-104) & VC-I9(AIS-090) is intended for safety marking tape for trucks and trailers with rigid surfaces. It provides excellent reflectivity which enhances night time safety and it is designed for easy application and durability. Glodian™ VC-E4 & VC-I9 is the perfect solution for various types of trucks and trailers with both metalized and sealed (air-backed)

Product Construction

REFLOMAX GLODIAN™ VC-E4(ECE-104) & VC-I9(AIS-090) rigid grade is composed of cube corner (retroreflective microprism) and are formed by hard polymer on flexible, UV-stabilized polymeric film which applied edge sealed technology.

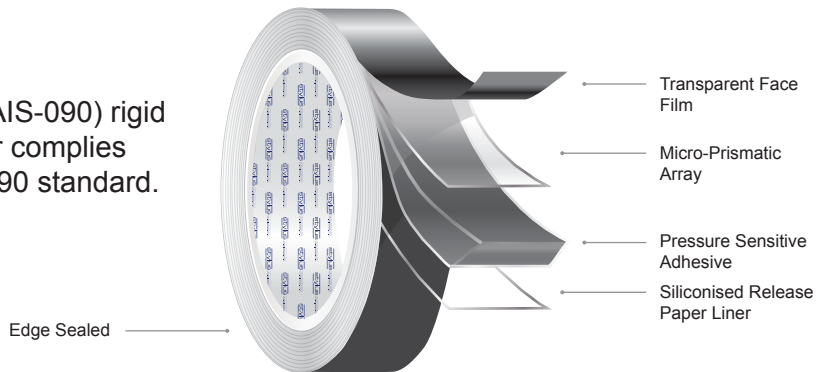
- ECE-104(Europe) certified
- AIS-090 certified by ARAI

Colour

REFLOMAX GLODIAN™ VC-E4(ECE-104) & VC-I9(AIS-090) rigid grade is available in white, yellow and red. The color complies with the requirements of regulation ECE-104 / AIS-090 standard.

Clear, solvent-based, permanent adhesive

Retroreflectivity



Color	Observation Angles	Entrance Angle $2(\beta_2)$	R _A
White	0.2°	5°	450
		30°	200
		40°	95
		60°	16
Yellow	0.2°	5°	300
		30°	130
		40°	75
		60°	10
Red	0.2°	5°	120
		20°	60
		30°	30
		40°	10

The above information is given in good faith for guidance only and not specification purposes. All data is based upon average values, the Purchaser shall be responsible for determining the suitability of this product for their purposes.

Daytime Colour Specification Limits

Color	Chromaticity Coordinates*								
	1		2		3		4		Y
	x	y	x	y	x	y	x	y	
White	0.300	0.270	0.385	0.355	0.345	0.395	0.260	0.310	>0.25
Yellow	0.545	0.454	0.487	0.423	0.427	0.483	0.465	0.534	>0.16
Red	0.690	0.310	0.595	0.315	0.569	0.350	0.655	0.350	>0.03

Nighttime Colour Specification Limits

Color	Chromaticity Coordinates*								
	1		2		3		4		Y
	x	y	x	y	x	y	x	y	
White	0.373	0.402	0.417	0.359	0.450	0.513	0.548	0.414	
Yellow	0.585	0.385	0.610	0.390	0.520	0.480	0.505	0.465	
Red	0.720	0.258	0.735	0.265	0.665	0.335	0.643	0.335	

Application Instructions

REFLOMAX GLODIAN™ VC-E4(ECE-104) & VC-I9(AIS-090) can be applied to truck and trailers. In order to apply proper adhesion between tape and the cleaned substrate, it must be installed when temperature is between 15°C and 38°C(64°F~100°F).

Before installation, all surfaces must be considered contaminated and must be cleaned prior to application. Wash the surface with detergent and water to remove dirt and road film. Use a clean cloth with isopropyl alcohol to wipe the surface in one direction to avoid spreading contamination. Freshly painted surfaces should be dried for at least 3 weeks and completely cured. The compatibility of the selected lacquer with the paint must be tested by the user before using the material. Self-adhesive reflective materials can only be used for dry applications. If the tensile strength of the material is low, the removal of the reflective film may be more difficult. After that immediately dry surface with a clean absorbant paper towel for better adhesion.

Installation

1. Clear surface properly
2. Do not overlap marking.
3. Apply only on flat surface.
4. Ensure that the tape is applied without tension.
5. Installing underneath belts or buckles is not recommended.

Shelf Life

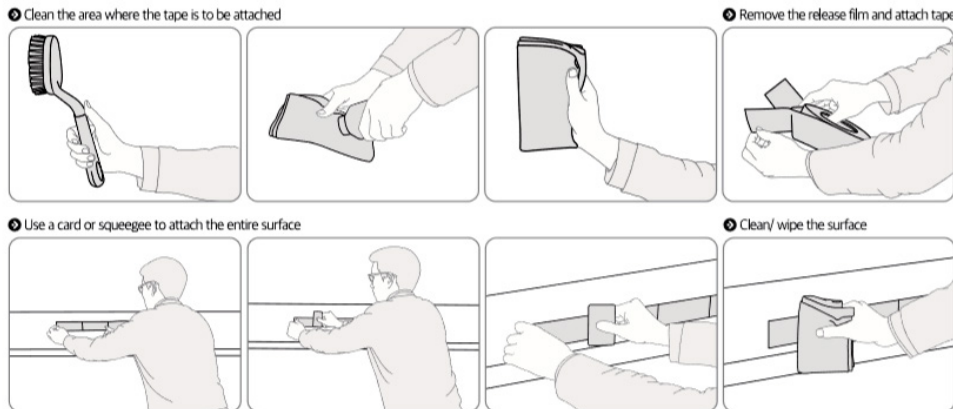
Must store in a cool dry area, store at room temperature 18°~25°C(64°F~77°F) and 30%~50% relative humidity and must be used within 1 year after date of receipt. Store rolls in their original cartons.

Maintenance

Regular cleaning is recommended for maximum performance. The following cleaning methods are recommended.

- 1) Wash with sponge, cloth or soft brush using water and detergent.
- 2) Automatic truck/trailer wash or standard high-pressure hand spray:
 - Maximum Pressure : 1,200psi
 - Maximum wash temperature : 60°C(140°F)
 - Water jets must be a minimum of 30.48[±](12") from the conspicuity tape
 - Spray water jets at no greater angle than 45°

How to install



Size & Packaging

Product size : 50mm(2") x 50M(54.7YD) per 1roll as standard.
Packing : 430mm x 410mm x 260mm per 1carton (contains 16rolls)
Gross weight : About 24kgs (54LBs) per 1carton.

Important Information

General Performance Consideration

Durability can be reduced if recommended techniques are not followed:

- Failure to cut markings around rivets, seams and body panels.
- Improper use of high pressure cleaning
- Spillage of chemicals or solvents.
- Improper application or surface preparation.

Except for the limited remedy stated above, and except where prohibited by law, Reflomax will not be liable for any loss or damage arising from any Reflomax product, whether direct, indirect, special, incidental or consequential damages(including but not limited to lost profits, business or revenue in anyway), regardless of the legal theory asserted including warranty, contract, negligence or strict liability.



TAPES INTERNATIONAL

ADHESIVE TAPE SPECIALISTS

Recommended Storage Conditions

Product must be kept in its original box and packaging in a dry atmosphere away from direct sunlight. The optimal storage conditions for this product is between 18°C - 22°C with a relative humidity of 40% - 50%.

Material Safety Data Sheet

MSDS can be downloaded from Stylus Tapes website www.stylustapes.com.au

Recommended Cleaning & Installation Procedures

STEP 1 - SURFACE EVALUATION:

There are numerous types of adhesive tapes, some suited to a variety of uses and others for more specialised individual applications. A thorough evaluation is recommended when bonding to any surface. Porous surfaces such as wood, concrete & brick should be smooth & sealed with an appropriate sealer prior to application. All adhesive tapes should only be applied to clean & dry surfaces. There are various methods of preparation depending on the surface and/or application. For technical advice we recommend you speak with our local sales office. Surfaces must be free of:

- Any Contaminants
- Moisture & Chemical Residue
- Dust, Fibres, Concrete Powders, Sand, Soil & Dirt Particles
- O.E.M. Cleaners, Grease, Wax, Detergent & Release agents on plastic profiles/extrusions etc
- Flaking Paint & Corrosion

STEP 2 - CLEANING INSTRUCTIONS:

The surface being applied to should be prepared with an appropriate cleaning solution, preferably IPA (Isopropanol) using a clean lint-free wiping cloth or disposable wipe (never re-cycled rags). Renew cleaning cloths regularly. (Applications involving paper, board, fabric etc do not require IPA cleaning) This should be performed immediately prior to application of adhesive tape. When using any cleaning solutions it is recommended to test a small area to ensure there is no reaction/discolouration with the surface. It is important to note that all painted/sealed surfaces should be completely dry/cured. (Refer to manufactures recommendations).

STEP 3 - INSTALLATION PROCESS:

Once the surface has been adequately prepared tape application can commence. Care should be taken to avoid finger contact with adhesive. The portion of tape held by your fingers should overlap the area being applied to & trimmed, as finger contact with any adhesive tape will significantly reduce its performance. Both single & double sided tapes require sufficient rub down pressure to ensure 100% surface contact. Where double sided tapes are being used pressure must be re-applied after both surfaces have been brought together. Surface temperature should be above 10°C at time of application. (Use some heat if necessary - Hair Dryer, Fan Heater etc.).

NB. Storage – Ensure all tapes are stored in clean/dry condition & returned to the protective bag between use.

SPECIAL NOTE: Adhesive Bond Strength will improve with time varying from a few hours to 2-3 days depending on the adhesive tape product used & climactic conditions.

Disclaimer

The information in this Product Data Sheet, including technical information, guidance, physical description of product, product characteristics, expected performance, safety and other information, are based on manufacturer tests, records, experience and review by Stylus Tapes technical staff, but not guaranteed as to reliability, accuracy or completeness. The values in the data tables in this Product Data Sheet are typical or average values and may vary. They are not specifications. Should you require further detail, please email Stylus Tapes Technical Department at sales@stylustapes.com.au.

The information in this Product Data Sheet is provided for the consideration of the distributor or user, as the case may be, and it is the responsibility of the distributor or user, as the case may be, to assess the product and the information and to independently determine whether the product is suitable for the intended application. Stylus Tapes cannot anticipate every intended use or potential application and many factors are beyond the control of Stylus Tapes and uniquely within the knowledge or control of the user or purchaser, as the case may be and related to the particular use and application by the distributor or user, as the case may be. Therefore, Stylus Tapes strongly recommends that products are first tested by the distributor or by the user, under individual application conditions, prior to commercial or specialist use.

The information does not constitute or imply a warranty of any kind, including, but not limited to, a warranty of saleability or of fitness for any particular purpose nor a representation for which Stylus Tapes assumes any legal responsibility. Except to the extent prohibited by law, Stylus Tapes will not be liable for any loss or damage arising from or related to the product.

Stylus Tapes will assess requests for return followed by replacement or refund of purchase price, at its sole discretion, of any product considered by the distributor or user, as the case may be, to be defective or faulty, provided that any defect or fault, if established, can be shown to be a manufacturing defect or fault and not caused by the distributor or user, as the case may be, including as a result of misuse, incorrect storage conditions, including exposure to sunlight or storage not in its original box, and including incorrect storage temperature or incorrect relative humidity level, or incorrect surface preparation. Stylus Tapes will only consider requests for return within 14 days of Stylus Tapes invoice date for any product considered faulty or defective by the distributor or user. Product cannot be returned until Stylus Tapes distributor has first submitted a request for return and obtained approval from Stylus Tapes after sales representative inspection. A return authorisation reference number together with written return instructions will then be provided. All special cut/non stock items cannot be returned. This Product Data Sheet is provided to all authorised distributors of Stylus Tapes and updated regularly by Stylus Tapes, and when information has changed, and it is the responsibility of any such distributor to provide the latest information herein, including the information in the Disclaimer, to any purchaser or user of the product, as the case may be.